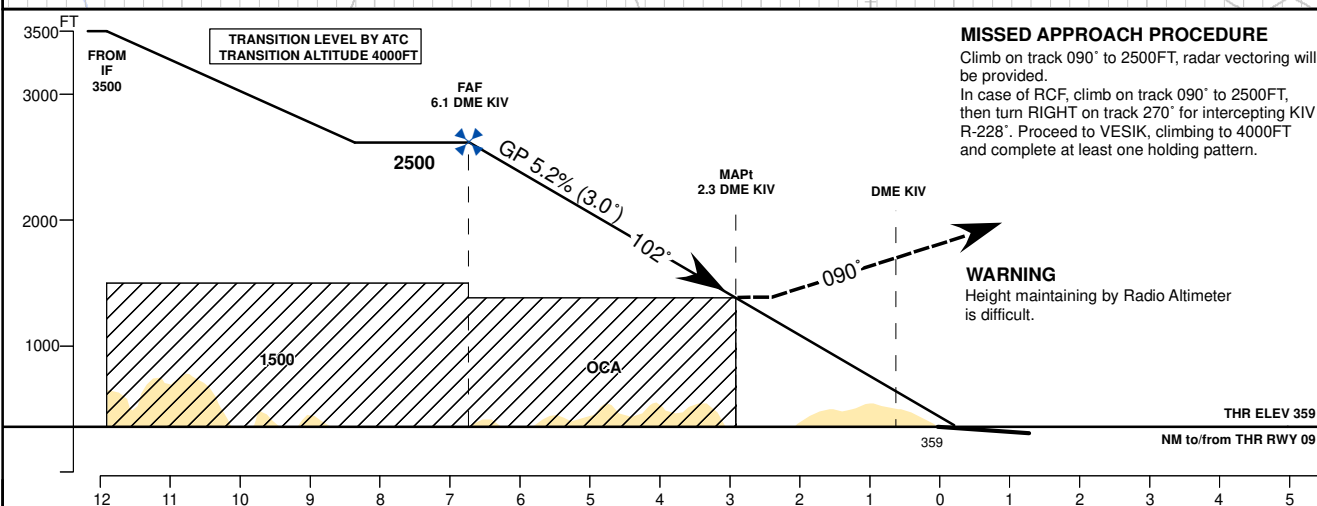
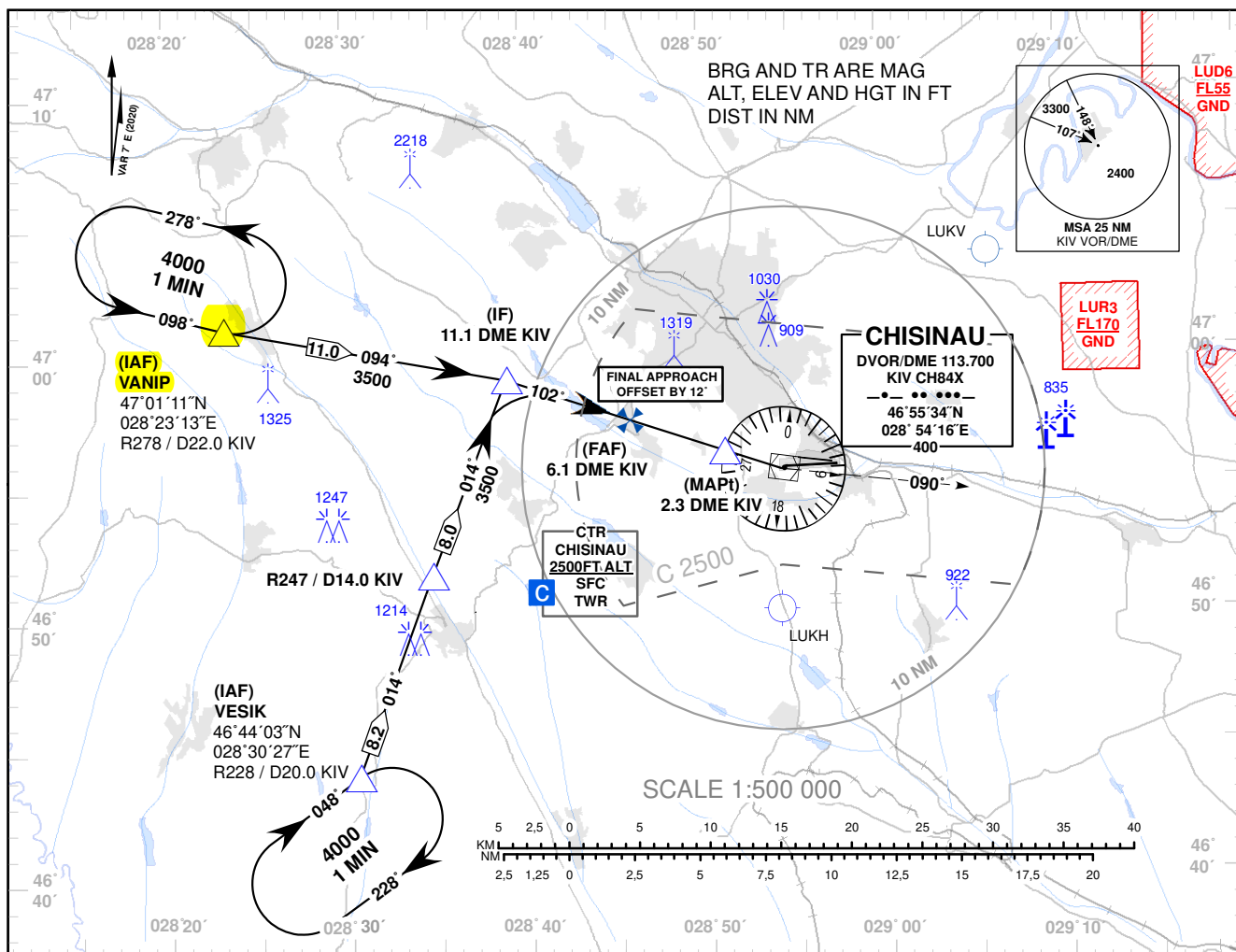


INSTRUMENT APPROACH CHART - ICAO

AD ELEV 399 FT
HEIGHTS RELATED TO
THR RWY 09 ELEV 359 FT

APP: 133.300 MHz
TWR: 118.100 MHz
ATIS: 125.225 MHz

CHISINAU/Intl (LUKK)
VOR/DME RWY 09



MISSED APPROACH PROCEDURE
Climb on track 090° to 2500FT, radar vectoring will be provided.
In case of RCF, climb on track 090° to 2500FT, then turn RIGHT on track 270° for intercepting KIV R-228°. Proceed to VESIK, climbing to 4000FT and complete at least one holding pattern.

WARNING
Height maintaining by Radio Altimeter is difficult.

OCA (OCH)	A	B	C	D
VOR/DME	1470 (1110)			

DME KIV	7	6	5	4	3	2
DIST THR	7.5	6.5	5.5	4.5	3.5	2.6
ALTITUDE (Height)	2500 (2141)	2478 (2119)	2159 (1800)	1844 (1485)	1523 (1164)	1223 (864)

Timing not Authorized for Defining the MAPt.

GS	kt	80	100	120	140	160	180
DISTANCE FAF-MAPt 3.8 NM	MIN:SEC	2:50	2:16	1:53	1:37	1:25	1:15
Rate of Descent (5.2%)	FT/MIN	425	531	637	743	849	955

Changes: CHISINAU CTR Changed. "LUKV/National" Aerodrome Added.

**INSTRUMENT APPROACH
CHART – ICAO**
**CHISINAU/IntI (LUKK)
VOR/DME RWY 09**

AERONAUTICAL DATA TABULATION		
VOR/DME Approach for RWY 09 from VANIP and VESIK		
Fix/point	Coordinates	
VANIP (IAF)	470111.0N	0282313.0E
VESIK (IAF)	464403.0N	0283027.0E
IF - BRG 101.8° / 11.08NM DME KIV	465909.1N	0283857.9E
FAF - 6.08NM DME KIV	465732.1N	0284552.7E
MAPt - 2.31NM DME KIV	465618.7N	0285105.1E
THR RWY 09	465557.74N	0285512.73E
KIV VOR/DME	465533.7N	0285416.2E